

Etiquette of Raindrops

for oboe, percussion, and harp

PERFORMANCE NOTES

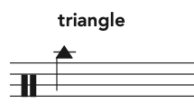
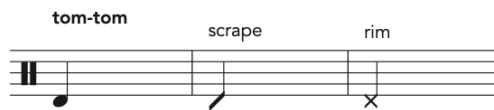
General:

- Let all percussion and harp notes ring unless otherwise noted

Percussion instrumentation:

- Unpitched: 1 tom-tom, 2 wood blocks, 1 shaker (such as an egg shaker), 1 cymbal, and 1 triangle
- Pitched: vibraphone

Percussion notation:



Harp notation:

⊕ = muffle strings

Two musical staves (treble and bass clef) showing harp techniques. The first staff has the label "gliss. across bass strings" with a downward arrow from the bass clef staff. The second staff has the label "bass gliss." with a downward arrow from the bass clef staff.

Two musical staves (treble and bass clef) showing a "pedal buzz" technique. A sharp sign is placed on the bass clef staff, and a symbol resembling a crossed hammer and pickaxe is placed below the staff.

Two musical staves (treble and bass clef) showing a "knock" technique. An 'X' is placed on the bass clef staff, and a symbol resembling a crossed hammer and pickaxe is placed below the staff.

Two musical staves (treble and bass clef) showing a "hit bass strings" technique. A symbol resembling a crossed hammer and pickaxe is placed below the bass clef staff.

Two musical staves (treble and bass clef) showing a "nail gliss." technique. The treble clef staff has a series of notes with arrows pointing down from them, and a dashed line above the staff with the label "gliss." and an upward arrow.

= nail gliss.

Two musical staves (treble and bass clef) showing a "thunder" technique. A symbol resembling a crossed hammer and pickaxe is placed below the bass clef staff.

Etiquette of Raindrops

for oboe, percussion, and harp

♩ = c. 60

Oboe

pp — *p* — *pp*

Percussion

pp — *p* — *pp*

Harp

p

Ob.

p > *pp* *p* > *pp* *p* > *pp*

timbral trill

Perc.

p > *pp*

Hp.

p

C₄

7

Ob. *p*

Perc. swipe *p* *pp*

Hp.

10

Ob. *pp* *p* *pp* = c. 52

Perc. scrape *pp* vibraphone

Hp. $D\flat A\flat$ gliss. across bass strings 6

13

Ob. *timbral trill* *p* *pp* *timbral trill* *p* *pp*

Perc. *motor: on* *p* *pp* *Ped.* *

Hp. 6 6 6 6 6 6

15

Ob. *timbral trill* *ppp* *c. 8"*

Perc. *unpitched percussion* *c. 8"*

Hp. *gliss.* *c. 8"* *pp* *bass gliss.*

18

Ob.

18

Perc.

18

Hp.

f

f

p

pp

p

bass gliss.

22

Ob.

22

Perc.

22

Hp.

f

pp

f

p

D \flat A \sharp

26 c. 3"

Ob. *f* 3 5

Perc. *f* crash tap *p* 3

Hp. *f* pedal buzz *p* knock

29 c. 5"

Ob. *mf* *p* 5

Perc. *p* *pp* *p* swipe c. 5" swipe

Hp. *mf* *p* *mp* bass gliss.

32

Ob. *mf* *p*

Perc. *mp* *mp* *pp*

Hp. *mf*

bass gliss.

hit bass strings

rim

♩ = c. 112 Suddenly faster

35

Ob. *f*

Perc. *pp* *f* *mf*

Hp. *pp* *f* *p*

scrape crash

gliss.

39

Ob.

39

Perc.

39

Hp.

p *mf* *p*

mf *p* *p*

42

Ob.

42

Perc.

vibraphone

42

Hp.

mf *p* *mf*

45

Ob.

45

Perc.

motor: off

45

Hp.

F_b

Detailed description: This system contains three staves. The Oboe staff (top) starts at measure 45 with a rest, followed by a series of eighth-note chords. Dynamics are marked *mp* and *p*. The Percussion staff (middle) starts at measure 45 with a rest, followed by a rhythmic pattern of eighth notes. Dynamics are marked *mf* and *p*. The instruction "motor: off" is written above the staff. The Piano staff (bottom) starts at measure 45 with a rest, followed by a series of eighth-note chords. Dynamics are marked *p*. A box containing F_b is located in the right-hand side of the piano staff.

48

Ob.

48

Perc.

unpitched percussion

48

Hp.

$D_b B_b A_b$

Detailed description: This system contains three staves. The Oboe staff (top) starts at measure 48 with a rest, followed by a series of eighth-note chords. Dynamics are marked *f*. The Percussion staff (middle) starts at measure 48 with a rest, followed by a rhythmic pattern of eighth notes. Dynamics are marked *pp* and *f*. The instruction "unpitched percussion" is written above the staff. The Piano staff (bottom) starts at measure 48 with a rest, followed by a series of eighth-note chords. Dynamics are marked *f*. A box containing $D_b B_b A_b$ is located in the right-hand side of the piano staff.

Ob. 52 *mf* *p*

Perc. 52 *mf*

Hp. 52 *p* *mf* *p*

Ob. 56 *mp* *p*

Perc. 56 *p*

Hp. 56 *mf* *p* *mf*

59

Ob. *mf* *mp* *p* *mp*

Perc. *mf* tap *mp* vibraphone

Hp. *p* *mp* *p*

62

Ob. *p* *mp* *p*

Perc. motor: on arco *p* *mf* *p* *mf*
Ped.

Hp. *mf* *mp* $D \flat B \natural$

♩ = c. 92 More relaxed

Ob. 65 *mf* 6

Perc. 65 motor: off norm. * Ped. * Ped.

Hp. 65 gliss. freely across all registers *p*

Ob. 70 *p* *mf* *p* *mf* *p* tr. *mf*

Perc. 70 unpitched percussion *p* *mf* * Ped.

Hp. 70 *p*

Ob. 74

5 *mf* tr. *p* timbral trill *mp*

Perc. 74

mp *mf* *mp* *p* *mp* *p*

Hp. 74

Ob. 78

p 3 tr. *pp*

Perc. 78 scrape

mp *p*

Hp. 78

83

Ob.

83

Perc.

83

Hp.

$E_b F G$

$B G F B A G$

mp

p

mf

p

f

mf

mp

8va

$\text{♩} = \text{c. } 60$ Playful

87

Ob.

87

Perc.

87

Hp.

timbral trill

timbral trill

p

mf

p

p

mf

mf

mf

f

tap

gliss.

89

Ob.

Perc.

Hp.

f
hit bass strings

gliss.

f *p* *f*

91

Ob.

Perc.

Hp.

mp

mf

mf

D₄ C₄ B₃ B₃

D₄ C₄ B₃ F₃ #

Ob. *mf* 6 6 6 6 6 6

Perc. *f* 3 *p* *mp* 3 tap

Hp. *f*

Ob. *fp* 6 6 6 6 6 6 *f*

Perc. *mf* 6 6 *mp* *f*

Hp. *p* *f* E \flat

♩ = c. 52 Heavy

98

Ob.

tr. *p*

98

Perc.

scrape *f* crash *mf* tap *p* motor: on Ped.

98

Hp.

p *pp* *p* gliss.

102

Ob.

p

102

Perc.

p

102

Hp.

p

107

Ob. *pp*

Perc. unpitched percussion *pp*

Hp. *pp* A_b A_#

112

Ob. *f* *pp* *f* *pp*

Perc. scrape *f* vibraphone

Hp. *f* *ff* *pp* *f* *ff* *pp* hit bass strings thunder

116

Ob.

p *pp* *p* *pp*

116

Perc.

motor: off

p *pp* *p* *pp*

Ped. *

116

Hp.

pp

121

Ob.

121

Perc.

arco unpitched percussion

p *pp*

gliss. across highest strings

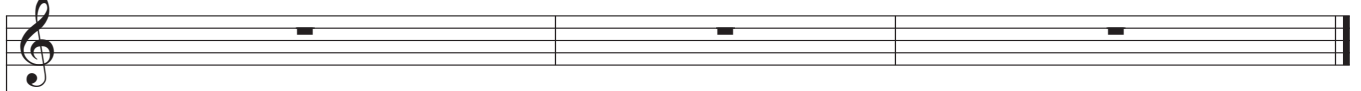
121

Hp.

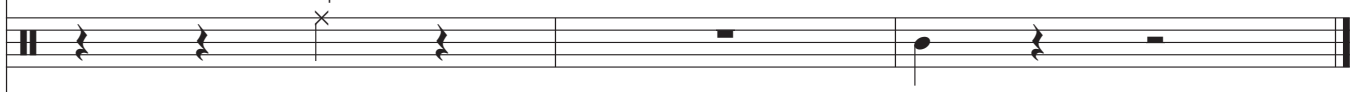
pp

A_b

127
Ob.



127 Perc. tap



127 Hp.

