

Love's Witness

for solo soprano

Music by Addie Camsuzou

Words by Katherine Philips
(1631–1664)

2021

Love's Witness

Slight unpremeditated Words are borne
By every common Wind into the Air;
Carelessly utter'd, die as soon as born,
And in one instant give both Hope and Fear:
Breathing all Contraries with the same Wind
According to the Caprice of the Mind.

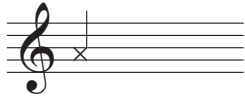
But Billetdoux are constant Witnesses,
Substantial Records to Eternity;
Just Evidences, who the Truth confess,
On which the Lover safely may rely;
They're serious Thoughts, digested and resolv'd;
And last, when Words are into Clouds devolv'd.

Katherine Philips
(1631-1664)

Performance Notes



= direction of air; inhale, exhale



= un-pitched, whispered or consonants only



= pitch non-specific; place in staff indicates general place in voice range



= repeated sounds; "r"s become rolled, consonants+vowels and consonants+consonants tremolo both sounds, and vowels within extended words tremolo the vowel only



= pitch fall



= grunt-like; low, un-pitched



= "yelp"-like gesture up to a high, non-specific pitch

nz = very nasal

IPA used:

Λ = "u" as in "up"

i: = "ee" as in "sheep"

eɪ = "ai" as in "wait"

Love's Witness

for solo soprano

Music by Addie Camsuzou

Words by Katherine Philips (1631 - 1664)

$\text{♩} = \text{c. } 72$ Mercurial

fp *f* *p* *f* *mp* *pp*

s t a s t i: t s t s t t

6 *mf* *pp*
whispered non vib. spoken
s s a slight un - pre - med - i - tat - ed d d d

10 *mp* *mf* *p* *mf* *pp* *mp* *p* *mp*
non vib. spoken
an pr i: p p p i: p p m p d d t p med - i - tat - ed d d d d pr i: p p p pre - med - i - tat - ed d

12 *p* *mf* *p* *mf* *pp* *mp*
accel. whispered consonants
s t s t s t slight un - pre - med - i - tat - ed words are born s t s t s pre - med - i - tat - ed

17 *f* *p* *mf* *f* *pp* *p*
whispered
wa words s slight un pre med - i - tat - ed words are born by

23 *pp* *p*
ev - ery com - mon wind in - to the air r ket k k k kr s l s l s l s

28 *f* *mp* *p* *mp* *f* *p*
care - less s k k k r ks i: k i: i: ks k k k care - less - ly i: k i: ks k k k

Love's Witness

33 *f* *mp* *p* *mp* *p*
 s k s k s k care - less - ly i: i: i: k s k s k s i: k i: k k k k k i:

38 *f* *p* *fp* *f* *mp* *pp* *fp*
 k care - less - ly³ ut - terr'd die as soon as born and in one in - stant t t t t t Δ
 whispered whispered

41 *mp* *p* *mf* *pp* *p* *pp* *p* *pp*
 norm. breathy non vib. breathy
 give both hope and fear r b breath - ing all con - trar - ies with the same

46 *p* *pp* *mf* *pp* *p* *pp*
 breathy non vib. breathy whispered
 wind ac - cord - ing to the ca - price of the mind

Romantic, hyper-expressive

53 inhale exhale, as a sigh c. 5" c. 4" *f* *nz*
 But bil let - doux

58 *p* *f* *mp* *mf* *mp*
 bil - let - doux doux doux are con - stant wit - ness - es

63 *p* *f* *pp* *f* *pp*
 humming
 sub - stan - tial rec - ords to e - ter - ni - ty m

69 *f*
 Just ev - i - den - ces

73
 who the truth con - fess On which the love

77 *mp* vib: slow -----> quick

the lov - er safe - ly may re - ly They're se -

82 *f* *p* *mp*

- ri - ous thoughts si: di - gest - ed and re -

87 *f* *p* *mp* *f*

solved and and and and

92 *mp* *f*

and last

Gradually losing steam

95 *mp* *p* *mp* *p* *mf*

s t s t s t s t s t and last s t s t s t s t when WA WA WA WA WA words s

100 *p* *mf* *p*

words are r WA WA WA WA WA when words are in - to clouds de - volv'd

103 *mp* *p* *mf*

d d d d d s t s t s t when nA words s are r t t t t kA lA clouds s

107 *p* *mp* *p*

s d s d s d are r k clouds d d d d d di: vA di: vA vd di: d d d clouds s

112 *pp* *ppp*

s t s t s t are k k k k k words s r